

# RELIABLE AND SECURE A4 BLACK AND WHITE PRINTER DELIVERING HIGH BUSINESS PRODUCTIVITY.

Designed to support small to medium size offices and workgroups with all their print needs.

## imageFORCE 1643P



### HIGH PRODUCTIVITY

Fast start-up and print speeds, plus flexible configuration with an expandable paper capacity options to support high business productivity.

### ROBUST SECURITY

Protect your business with the latest security features, including machine learning-AI recommended security settings that help safeguard device, network and all your sensitive data.

### SUPPORTING SUSTAINABILITY

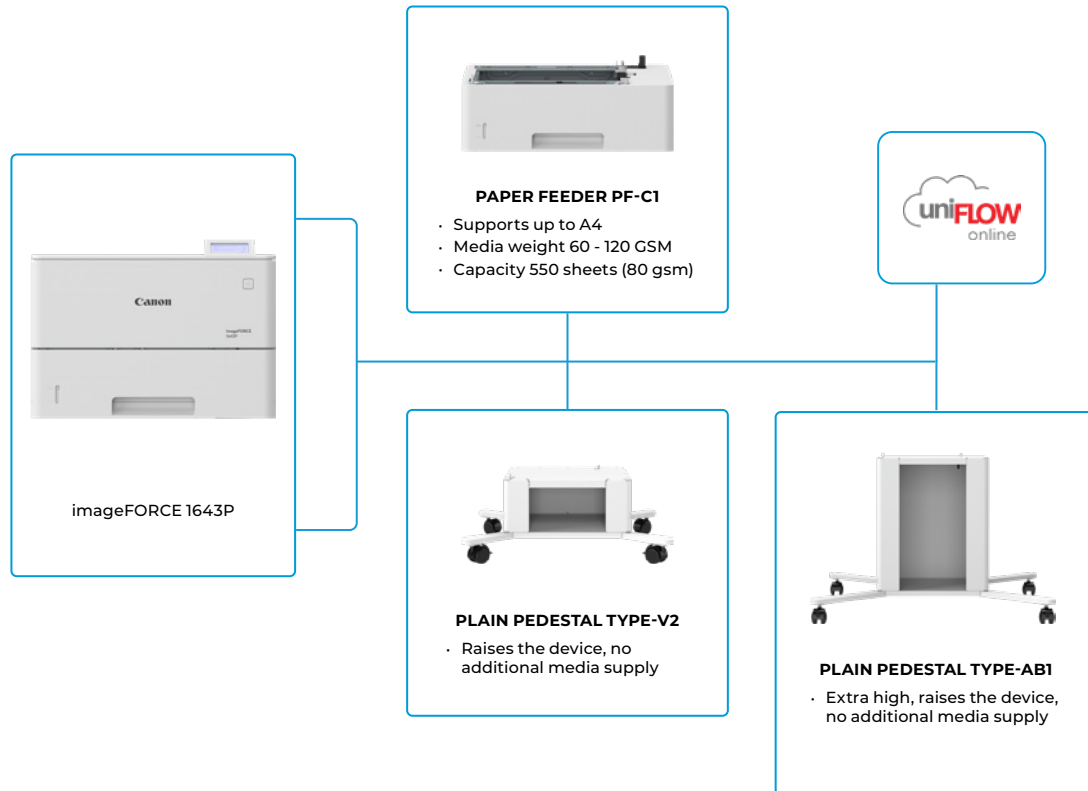
Boost your sustainability efforts with devices that are built with up to 10% recycled materials and feature technologies like low temperature melting toner to lower the energy consumption.

### PROVEN RELIABILITY

Compact yet capable, this latest generation of market proven devices deliver outstanding reliability and performance to produce high quality print output day-in day-out.

# imageFORCE 1643P

## MAIN CONFIGURATION OPTIONS



This flat configuration is for illustration purpose only. For a complete list of options and the exact compatibility relationships, please refer to the [online product configurator](#).

# TECHNICAL SPECIFICATIONS

# imageFORCE 1643P

MAIN UNIT	
Machine type	A4 Monochrome Laser Beam Printing
Core functions	Print
Processor	1.6GHz Dual Core Processor and 800MHz Single Core Processor
Control Panel	5 Line LCD, 5 LED (Online, Ready, Message, Job and Energy saver), Buttons, 10-key numeric keypad
Memory	RAM: 2.0GB
Storage	eMMC 32GB eMMC
Interface Connection	NETWORK Standard: 1000Base-T/100Base-TX/10Base-T Wireless LAN (IEEE 802.11b/g/n) OTHERS USB 2.0 (Host) x 1, USB 2.0 (Device) x 1
Paper Supply Capacity (A4, 80gsm)	Standard: 650 sheets 100-sheet Multi-purpose tray x 1 550-sheet Paper cassette x 1 Maximum: 2,300 sheets (with 1 x PAPER FEEDER PF-C1x3)
Paper Output Capacity (A4, 80gsm)	150 sheets
Supported Media Types	Multi-purpose tray: Thin, Plain, Recycled, Color, Heavy, Bond, Label, Letterhead, Envelope  Paper Cassette: Thin, Plain, Recycled, Color, Heavy, Bond, Letterhead
Supported Media Sizes	Multi-purpose tray: Standard size: A4, A5, A5R, A6, B5 Custom size: 76.2 x 127.0 mm to 216.0 x 355.6 mm Envelopes: COM10 No.10, Monarch, DL, ISO-C5 Envelope custom size: 76.2 x 127.0 mm to 216.0 x 355.6 mm  Paper Cassette: Standard size: A4, A5, A5R, A6, B5 Custom size: 105.0 x 148.0 mm to 216.0 x 355.6 mm
Supported media weights	Multi-purpose tray: 60 to 200 gsm Paper Cassette: 60 to 120 gsm Duplex: 60 to 120 gsm
Warm-up Time	22 Seconds or less From Sleep Mode: 4 Seconds or less
Dimensions (W x D x H)	409 mm x 376 mm x 275 mm
Installation Space (W x D)	609 mm x 867 mm
Weight*	Approx. 16 kg
*including regular toner	
PRINT SPECIFICATIONS	
Print Speed (BW and CL)	1-sided: Up to 43 ppm (A4), Up to 65.2 ppm (A5-Landscape) 2-sided: Up to 36 ipm (A4)
Print Resolution (dpi)	Up to 1,200 x 1,200
Page description languages	Standard: UFR II, PCL6, PCL5*, Adobe® PostScript®3™ *Commands supported only. Third party driver or direct printing from application required.
Direct Print	Supported file types: PDF, TIFF/JPEG, XPS (From USB Memory, Network Place)
Printing from mobile and cloud	AirPrint, Mopria, IPP Everywhere, Canon PRINT, uniFLOW Online, Universal Print
OS Standard Printing	Android/Windows® 10/Windows® 11/Chrome OS/macOS (11.2.2 or later) /iOS (15.2 or later) /iPadOS
Fonts	PS fonts: 136 Roman PCL fonts: 93 Roman, Barcode fonts*1  *1 Optional Barcode Printing Kit-D1 is required.
Print Features	Secure Print, Secure Watermark, Header/Footer, Page Layout, Two-sided Printing, Mixed Paper Sizes/ Orientations, Toner Reduction, Poster Printing, Forced hold printing, Print Date, Scheduled Printing, Printing Using a Virtual Printer
Operating System	UFR II: Windows® 10/11/Server2016/Server2019/Server2022/Server2025, macOS (10.15 or later) PCL: Windows® 10/11/Server2016/Server2019/Server2022/Server2025 PS: Windows® 10/11/Server2016/Server2019/Server2022/Server2025, macOS (10.15 or later) PPD: Windows® 10/11, macOS (10.15 or later)  As of Dec. 2025

SECURITY SPECIFICATIONS	
Authentication And Access Control	User Authentication (Username and Password Login*), Department ID Authentication (Department ID and PIN Login, Function Level Login), uniFLOW Online (PIN Login, Picture Login, Picture and PIN Login, Card Login, Card and PIN Login, Username and Password Login, Department ID and PIN Login, Function Level Login), Access Management System (Access Control)  *Remote UI only
Document Security	Print Security(Secure Print, Encrypted SecurePrint, Forced Hold Printing, uniFLOW Secure Print*) *1 Requires optional uniFLOW Online / uniFLOW
Network Security	TLS1.3, IPSec, IEEE802.1X authentication (LAN/WLAN), SNMPv3, Firewall Functionality(IP/MAC Address Filtering), WPA3 support, Dual Network Support (Wired LAN/Wireless LAN, Wired LAN/Wired LAN), Disabling Unused Functions (Enabling/Disabling Protocols/Applications, Enabling/Disabling Remote UI, Enabling/Disabling USB Interface), Communication Line Separation (USB Port)
Device Security	Protecting eMMC Data (FIPS140-2), Standard Storage Initialize, Job Log Conceal Function, Protecting MFP Software Integrity, Checking MFD Software Integrity & Platform Firmware Resiliency (NIST SP800-193) with Automatic System Recovery (Verify System at Start-up, Runtime Intrusion Detection enabled with Trelix Embedded Control)
Device Management And Auditing	Administrator Password, Digital Certificate and Key Management, Audit Log, Cooperating with External Security Audit System (Security Information and Event Management), Security Policy Setting
ENVIRONMENTAL SPECIFICATIONS	
Operating Environment	Temperature: 10 to 30 °C Humidity: 20 to 80 % RH (Relative Humidity/No condensation)
Power source	220-240V(±10%) 50/60Hz (±2Hz)
Power consumption	Maximum: Approx. 1400 W Active printing: Approx. 507 W Standby: Approx. 6.7 W Sleep mode: Approx. 0.59 W Typical Electricity Consumption (TEC)*: 0.35 kWh/week (230V)  *As per Energy star v3.2 For detailed information relating to Lot26 regulation, please go to: <a href="http://www.canon-europe.com/For_Work/Lot26/index.aspx">http://www.canon-europe.com/For_Work/Lot26/index.aspx</a>
Noise Levels	Sound Pressure: Active: 54dB Standby: 24dB Sound Power: Active: Duplex 68dB / Simplex 69dB Standby: 37dB
Standards	Blue Angel (Validation Pending)
CONSUMABLES	
Toner Cartridges	TONER T06 (20,500 pages) *Estimated @5% coverage
SOFTWARE AND PRINTER MANAGEMENT	
Tracking and reporting	uniFLOW Online
Remote management tools	iW Enterprise Management Console Monitoring Service
Optimisation tools	Canon Driver Configuration Tool
PAPER SUPPLY OPTIONS	
Paper Feeder PF-C1	Paper Capacity: 550 sheets (80 gsm) Paper Type: Thin, Plain, Recycled, Color, Heavy, Bond, Letterhead Paper Size: A4, A5, A5R, A6, B5 Custom size: 105.0 x 148.0 mm to 216.0 x 355.6 mm Paper Weight: 60 to 120 gsm
HARDWARE ACCESSORIES	
Others	Plain Pedestal Type-V2 Plain Pedestal Type-AB1
SYSTEM AND CONTROLLER OPTIONS	
Print Accessories	Barcode Printing Kit-D1 PCL International Font Set-A1

# imageFORCE 1643P

Trellix



## Certifications and compatibility



**Canon**

Canon Inc.  
Canon.com

Canon Europe  
canon-europe.com

English Edition  
© Canon Europa N.V. 2026